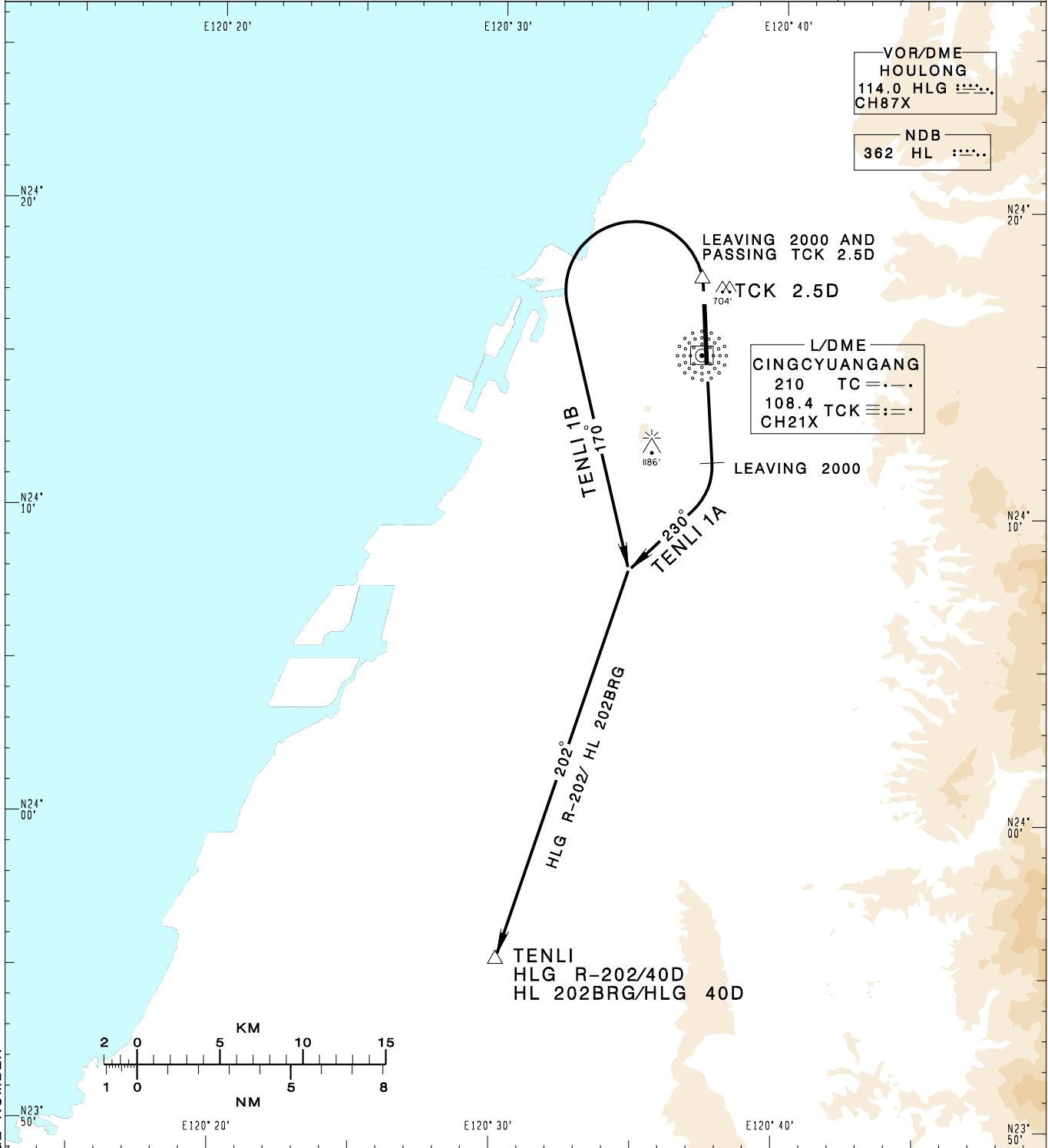


**臺中/清泉崗機場**  
TAICHUNG/CINGCYUANGANG AD

RCMQ SID  
TENLI 1A(RWY18)  
TENLI 1B(RWY36)

TAIPEI APP 130.1 129.6	TAICHUNG TWR 118.75 120.25	ATIS 127.75	VAR 4° W	
Apt Elev: 665'	Trans Level: FL130	Trans Alt: 11,000'		
BEARINGS ARE MAGNETIC; DISTANCES ARE NAUTICAL MILES; ELEVATIONS, HEIGHTS IN FEET				MSA TC 25NM



CHANGES: NEW PAGE NUMBER

**TENLI ONE ALFA DEPARTURE**  
Depart on RWY HDG until leaving 2,000, then turn right HDG 230 to track HLG R-202/HL 202BRG to TENLI to join W4.

**TENLI ONE BRAVO DEPARTURE**  
Depart on RWY HDG until leaving 2,000 and passing TCK 2.5D, then turn left HDG 170 to track HLG R-202/HL 202BRG to TENLI to join W4.

**Note:**  
1. For RWY18/36: Requires a minimum climb gradient of 5% (300ft/NM) until 2000ft.  
2. For RWY36: Caution close-in obstacles (trees) 704ft MSL, 150m northeast of DER.